



AMMONIA GAS DETECTOR AD-1



- * WIDE OPERATING TEMPERATURE RANGE: -40 TO 100°F
- * ELECTRONIC SENSOR: NO MAINTENANCE REQUIRED
- * ADJUSTABLE SET POINT: 25 TO 275 PPM AMMONIA
- * WIDE POWER SUPPLY RANGE: 10 TO 26 VAC OR VDC
- * SIMPLE INSTALLATION AND OPERATION
- * CONNECTS TO CLASS A & B PANELS
- * FAIL SAFE SYSTEM EXPLOSION PROOF DESIGN: IGNITION PROTECTED
- * COST EFFECTIVE

SPECIFICATIONS

SIZE: 4½ x 4½ x 2 inches
 SHIPPING: one pound
 VOLTAGE: 10 to 26 VAC or VDC
 CURRENT DRAW: 83ma @ 12V, 41ma @ 24V
 SENSOR MAINTENANCE: none required
 COLOR: White
 ALARM SET POINT: 25 to 275 ppm Ammonia
 AD-1 TEMPERATURE RANGE: -40 to 100°F
 AD-1-H TEMPERATURE RANGE: 0 to 150°F
 RELAY: 1A, 125V, 30VA, SPDT, Dry Contacts
 RESPONSE TIME: 3 minutes
 SENSOR LIFE: 7 to 10 years

INTERFERENCES

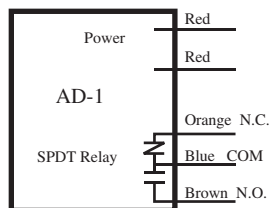
When the AD-1 is set to 100 ppm, the following approx. gas levels can cause an alarm:

NATURAL (METHANE): 10,000 ppm
 PROPANE, BUTANE, LP: 4000 ppm
 CARBON MONOXIDE: 600 ppm
 HYDROGEN: 100 ppm
 ETHYLENE OXIDE: 100 ppm
 REFRIGERANT R-11: 10,000 ppm
 REFRIGERANT R-12: 10,000 ppm
 REFRIGERANT R-22: 1000 ppm
 REFRIGERANT R-502: 1000 ppm

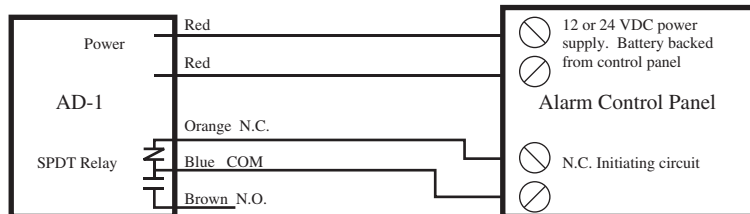
NOTE: Ammonia is lighter than air: Mount AD-1 high.

OPTION: AD-1-H detector with an operating temperature range of 0 to 150°F.

AD-1 CONNECTIONS



TYPICAL AD-1 SYSTEM



NOTE:

1. Space the AD-1's the same as smoke detectors: 30 foot centers, 900 square feet per unit.
2. The AD-1 meets OSHA and ACGIH standards for exposure to ammonia. Set the control as needed.

MANUFACTURED BY:



3946 S. Mariposa Street
 Englewood, Colorado 80110
 (303) 781-4062 FAX # (303) 761-6640
 www.macurco.com

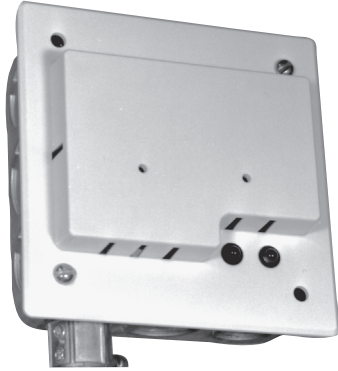
DISTRIBUTED BY:

8/95



AMMONIA GAS DETECTOR

AD-12



- * CONNECTS TO ALARM CONTROL PANELS
- * TWO RELAYS AT TWO LEVELS OF DETECTION
- * WIDE POWER SUPPLY RANGE: 10 to 26 Vac or Vdc
- * EXPLOSION PROOF DESIGN: IGNITION PROTECTED
- * WIDE OPERATING TEMPERATURE RANGE: -40 to 100°F
- * MAINTENANCE FREE ELECTRONIC SENSOR, SUPERVISED
- * SMALL, COMPACT, MOUNTS ON 4 X 4 ELECTRICAL BOX
- * STANDARD CALIBRATION: 25 & 100 ppm (Parts Per Million)
- * SPECIAL CALIBRATIONS ARE AVAILABLE

SPECIFICATIONS

SIZE: 4½ x 4½ x 2 inches
 SHIPPING: one pound
 VOLTAGE: 10 to 26 Vac or Vdc
 POWER: 1.0 VA
 COLOR: White
 ALARM SET POINTS: 25 & 100 ppm ammonia
 RELAY MAX. RATING: 1 AMP, 125 V, 30 VA
 RELAY TIME DELAY: One minute
 REPLAY CONTACTS: Two, dry, SPDT
 OPERATING TEMP. RANGE: -40 to 100°F
 DETECTOR SPACING: 30 feet, 900 square feet
 CONNECTIONS: 8 @ number 20 wires
 RESPONSE TIME: 3 Minutes

INTERFERENCES

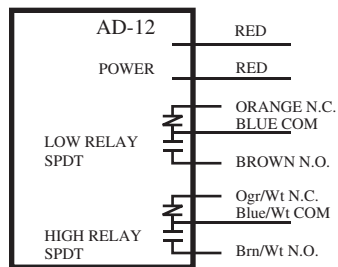
If the AD-12 were set to 100 ppm, the following approx. gas levels can cause an alarm:

NATURAL GAS (METHANE): 10,000 ppm
 PROPANE, BUTANE, LP: 4000 ppm
 CARBON MONOXIDE: 600 ppm
 HYDROGEN: 100 ppm
 ETHYLENE OXIDE: 100 ppm
 R-11: 10,000 ppm
 R-12: 10,000 ppm
 R-22: 1000 ppm
 R-502: 1000 ppm

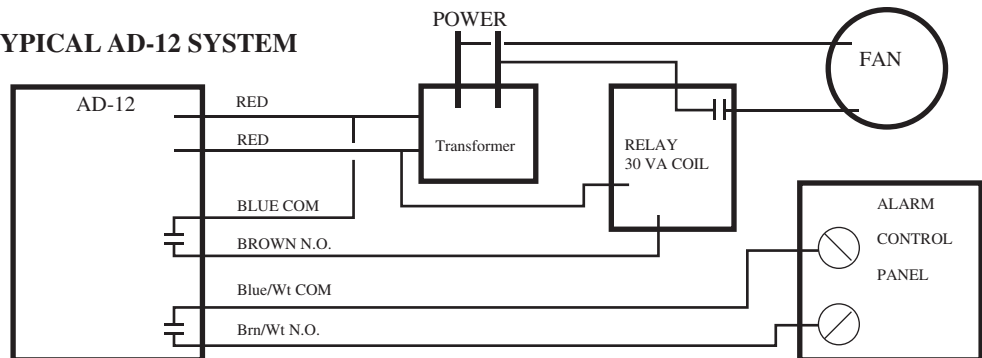
NOTE: Ammonia is lighter than air: Mount AD-12 high.

OPTION: AD-12-H detector with an operating temperature range of 0 to 150°F.

AD-12 CONNECTIONS



TYPICAL AD-12 SYSTEM



NOTE: The standard calibration for the AD-12 complies with all standards set by ACGIH (American Conference of Governmental Industrial Hygienists) and OSHA.

MANUFACTURED BY:

DISTRIBUTED BY:

7/95



3946 S. Mariposa Street
 Englewood, Colorado 80110
 (303) 781-4062 FAX # (303) 761-6640
 www.macurco.com